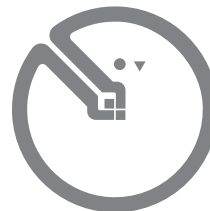


DATASHEET

RS-HYJ41M4QT-2
UHF RFID Dry Inlay

KEY DATA

Chip: Monza M4QT
Antenna Size: Phi 12 mm
Format: Dry Inlay, Wet Inlay,
White Paper

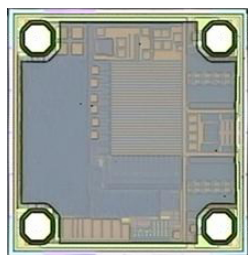


APPLICATION

Supply Chain & Logistics Management
Warehouse Management

RS-HYJ41M4QT-2

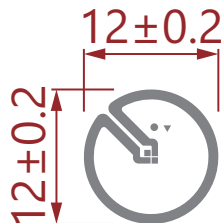
OVERVIEW



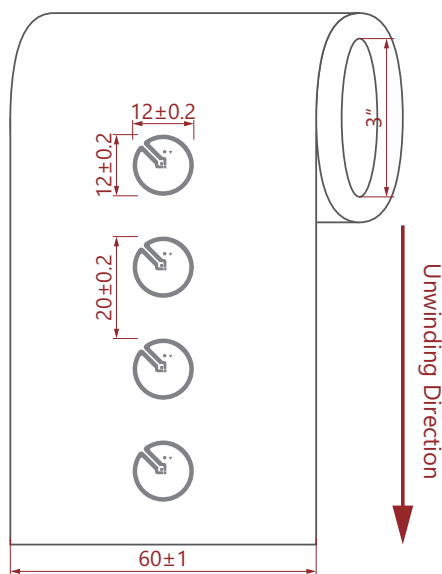
RS-HYJ41M4QT-2 UHF RFID Dry Inlay is built with Impinj Monza 4QT.

Monza 4QT tag chips offer 512 bits of user memory, 128 bits of EPC memory, block permalock capability, a serialized TID, and True3D antenna support. The extended User memory options support applications where users cannot count on a database connection. The 512 bits of User memory enables a portable, but private database to travel with the tag. Monza 4QT also provides Impinj's patent-pending QT technology, which protects data confidentiality and consumer privacy.

DIMENSIONS



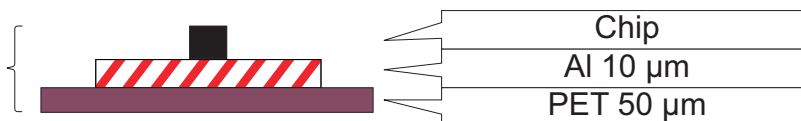
ORIENTATION



Physical characteristics	Dimensions
Antenna size	Phi 12 mm
Inlay pitch	20 mm
PET width	60 mm
Dry Inlay thickness	Al 10 μ m + PET 50 μ m
Reel detail	Web width: 60 \pm 1.0 mm Inner core diameter: 3" (76.2 mm) Core thickness: 5 \pm 2 mm

STRUCTURE

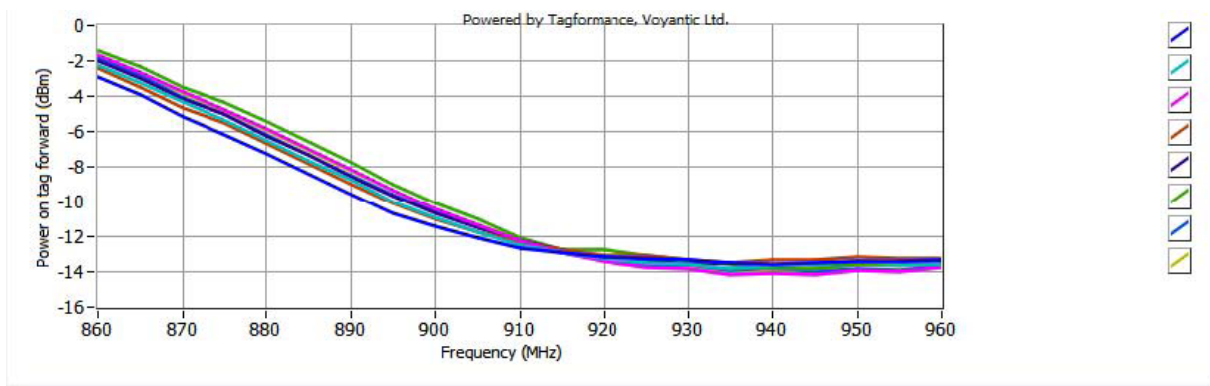
Dry inlay



ELECTRICAL CHARACTERISTICS

Item		Description
Manufacture/IC		Impinj Monza 4QT
Base Material		PET
Antenna		Etched Al (10 μm) + PET (50 μm)
Protocol		RAIN RFID / ISO 18000-6C and EPC global Gen2v2 Compliant
Memory	User	512 bits
	TID	48 bits
	EPC	128 bits
	Password	Kill Password - 32 bits
Access Password - 32 bits		
Frequency		860 ~ 960 MHz
Operating Mode		Passive
IC Life		100,000 Programming cycles, 50years data retention
ESD Voltage Immunity		Max. 2000 V

TAG PERFORMANCE



DATASHEET

RS-HYJ41M4QT-2
UHF RFID Dry Inlay

ENVIRONMENTAL REQUIREMENT

- Operating Temperature/Humidity: -5°C ~ 60°C / 20% ~ 80% RH
- Storage Temperature/Humidity: 20°C ~ 30°C / 20% ~ 60% RH
- Shelf Life: From the date of manufacture, 1 year in anti-static bag at 20°C ~ 30°C / 20% ~ 60% RH, and avoid direct sunlight exposure

PACKAGING

Reference Packing: Static-free bag with zipper; 12000 ± 100 Pcs/roll, 4 rolls/ctn (Actual Qty as per Shipping Mark).

